

# Dialight



## Dialight® LED GRP Linear - IECEx

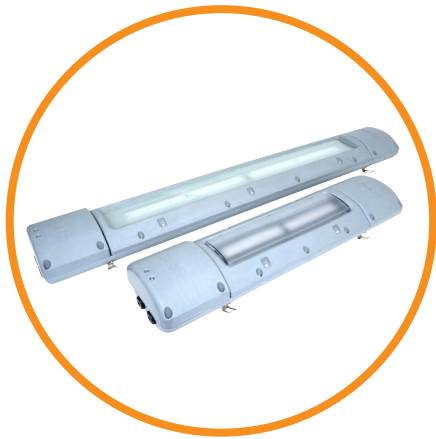
Technical Specification Sheet - APAC



APRIL 2020

## SafeSite® LED GRP Linear

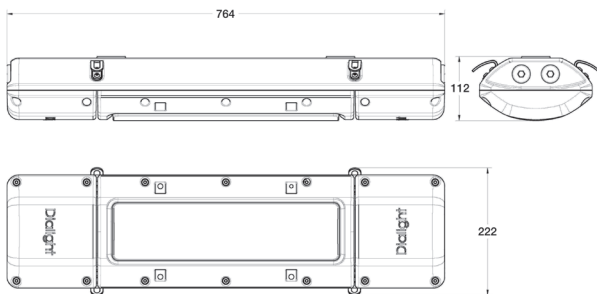
IECEx



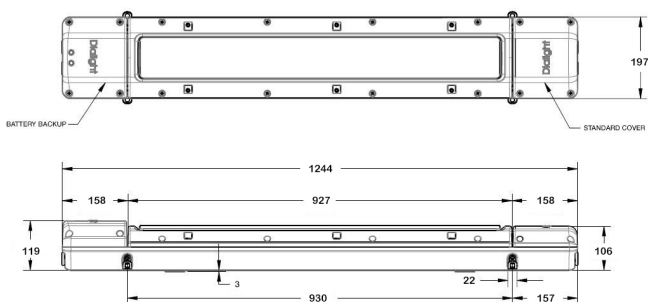
### Certifications & Ratings

- 10 year warranty
- CE
- RCM
- IP66/67
- IECEx Zone 1, 2, 21 & 22
  - Ex II 2 GD
    - Ex eb mb op is IIC T4 Gb
    - Ex tb op is IIIC T130°C Db
    - Certification numbers:
      - Sira 19ATEX4226X
      - IECEx SIR 19.0068X
  - Ex II 3 GD
    - Ex ec IIC T4 Gc
    - Ex tc IIIC T130°C Dc
    - IECEx SIR 19.0069X
  - Ex II 2 D
    - Ex tb op is IIIC T130°C Db
    - IECEx SIR 19.0069X
- IECEx Zones 2, 21 & 22
- DALI 1.0/2.0 as standard
- Up to 2,875 & 5,750 (nominal) lumen outputs

### 764 mm Model



### 1244 mm Model



Dimensions in mm

### Mechanical Information:

#### Fixture weights:

Standard models: 764 mm: 7.7 kg  
1244 mm: 10.9 kg

Emergency models: 764 mm: 8.6 kg  
1244 mm: 11.8 kg

#### Mounting:

(2) M8 fixing points  
Other mounting options available, see page 5 for details

#### Cable entry:

(2) M25 cable entries at both ends, through wired as standard

#### Safety Retention:

(4) 316 Stainless steel tabs as standard

### Electrical Specifications:

#### Operating voltage:

Standard: 100-277 VAC, 50/60Hz  
120-250 VDC

Emergency: 230/240 VAC, 50Hz  
110/120 VAC, 60Hz (Zone 1 only)

#### Operating temperature:

Standard models: -40°C to +65°C  
Emergency models: -20°C to +50°C

#### Harmonics & emissions:

IEC 55015 (conducted & radiated)  
IEC 61000-3-2  
IEC 61000-3-3  
IEC 61547

#### Transient protection:

IEC 61000-4-5  
6kV line-to-line & line-to-ground

#### Power factor:

> 0.9

### Emergency Models:

**Lumen output in EM mode:** 10-25% of initial light output (depending on selected duration and length of fitting)

**Expected battery life\*:** 4 years

**Battery duration\*:** 90 min. (standard)  
60/180 min. (optional, field-configurable)

### Materials:

#### Housing:

Glass-reinforced polyester

#### Lens:

- Textured polycarbonate convex lens (standard)  
- Textured flat glass lens (optional)

### Photometric Information:

**CRI:** 80 minimum

**CCT:** 5000K (cool white)  
4000K (neutral white)  
Green (Shower-Safe/Eye-Wash station model)  
Amber (Wildlife-Friendly)

All values typical unless otherwise stated (tolerance +/- 10%)

\* @ 25°C ambient

## Ordering Information

### SafeSite® LED GRP Linear - IECEx



Part Number	Fixture Lumens (Nominal)	Wattage	lm/W	Voltage	CCT	Lens
<b>Zone 1, 2, 21 &amp; 22 Models (Standard)</b>						
P2ABMC23A54WGN	2,875	25	115	100-277 VAC/120-250 VDC	5000K (cool white)	Textured Polycarbonate
P4ABMC26A54WGN	5,750	47	123	100-277 VAC/120-250 VDC	5000K (cool white)	Textured Polycarbonate
P2ABMN23A54WGN	2,785	25	111	100-277 VAC/120-250 VDC	4000K (neutral white)	Textured Polycarbonate
P4ABMN26A54WGN	5,575	47	119	100-277 VAC/120-250 VDC	4000K (neutral white)	Textured Polycarbonate
<b>Zone 1, 2, 21 &amp; 22 Models (Emergency Backup)</b>						
P2ABMCG3A54WGF	2,875	29	99	230/240 VAC	5000K (cool white)	Textured Polycarbonate
P4ABMCG6A54WGF	5,750	51	113	230/240 VAC	5000K (cool white)	Textured Polycarbonate
P2ABMC13A54WGF	2,875	29	99	110/120 VAC	5000K (cool white)	Textured Polycarbonate
P4ABMC16A54WGF	5,750	51	113	110/120 VAC	5000K (cool white)	Textured Polycarbonate
P2ABMNG3A54WGF	2,785	29	96	230/240 VAC	4000K (neutral white)	Textured Polycarbonate
P4ABMNG6A54WGF	5,575	51	109	230/240 VAC	4000K (neutral white)	Textured Polycarbonate
P2ABMN13A54WGF	2,785	29	96	110/120 VAC	4000K (neutral white)	Textured Polycarbonate
P4ABMN16A54WGF	5,575	51	109	110/120 VAC	4000K (neutral white)	Textured Polycarbonate
<b>Zone 2, 21 &amp; 22 Models (Standard)</b>						
P2BBMC23A5NWGN	2,875	25	115	100-277 VAC/120-250 VDC	5000K (cool white)	Textured Polycarbonate
P4BBMC26A5NWGN	5,750	47	123	100-277 VAC/120-250 VDC	5000K (cool white)	Textured Polycarbonate
P2BBMN23A5NWGN	2,785	25	111	100-277 VAC/120-250 VDC	4000K (neutral white)	Textured Polycarbonate
P4BBMN26A5NWGN	5,575	47	119	100-277 VAC/120-250 VDC	4000K (neutral white)	Textured Polycarbonate
<b>Zone 2, 21 &amp; 22 Models (Emergency Backup)</b>						
P2BBMC23A5NWGF	2,875	29	99	230/240 VAC	5000K (cool white)	Textured Polycarbonate
P4BBMC26A5NWGF	5,750	51	113	230/240 VAC	5000K (cool white)	Textured Polycarbonate
P2BBMN23A5NWGF	2,785	29	96	230/240 VAC	4000K (neutral white)	Textured Polycarbonate
P4BBMN26A5NWGF	5,575	51	109	230/240 VAC	4000K (neutral white)	Textured Polycarbonate

All values typical unless otherwise stated (tolerance +/- 10%).

**DISCLAIMER.** All product information provided is, to the best of Dialight's knowledge, accurate as of the date of publication. When ordering, refer to [www.dialight.com](http://www.dialight.com) for current versions of: (a) relevant product documentation (including the relevant product data sheets); (b) Dialight terms and conditions of sale; and, (c) the relevant product warranty. To the extent that any contract is deemed formed between Dialight and the purchaser of Dialight products and/or an end-user, versions of documents available at [www.dialight.com](http://www.dialight.com) as at the date of sale shall be the versions incorporated therein. In the event of any discrepancy between this document or information provided at [www.dialight.com](http://www.dialight.com), the latter shall prevail.

# Ordering Information

## SafeSite® LED GRP Linear - IECEx



Part Number	Fixture Lumens (Nominal)	Wattage	lm/W	Voltage	CCT	Lens
<b>Shower-Safe/Eye-Wash Station Version - Zone 1, 2, 21 &amp; 22 (Emergency Backup)</b>						
P2ABMG3A54WGF		29		230/240 VAC	Green	Textured Polycarbonate
P4ABMG6A54WGF		51		230/240 VAC	Green	Textured Polycarbonate
P2ABMG13A54WGF		29		110/120 VAC	Green	Textured Polycarbonate
P4ABMG16A54WGF		51		110/120 VAC	Green	Textured Polycarbonate
<b>Shower-Safe/Eye-Wash Station Version - Zone 1, 2, 21 &amp; 22 (Emergency Backup)</b>						
P2BBMG23A5NWGF		29		230/240 VAC	Green	Textured Polycarbonate
P4BBMG26A5NWGF		51		230/240 VAC	Green	Textured Polycarbonate
<b>Wildlife Friendly - Zone 1, 2, 21 &amp; 22 (Standard)</b>						
P2ABMA23A54WGN		25		100-277 VAC/120-250 VDC	Amber	Textured Polycarbonate
P4ABMA26A54WGN		47		100-277 VAC/120-250 VDC	Amber	Textured Polycarbonate
<b>Wildlife Friendly - Zone 1, 2, 21 &amp; 22 (Emergency Backup)</b>						
P2ABMAG3A54WGF		29		230/240 VAC	Amber	Textured Polycarbonate
P4ABMAG6A54WGF		51		230/240 VAC	Amber	Textured Polycarbonate
P2ABMA13A54WGF		29		110/120 VAC	Amber	Textured Polycarbonate
P4ABMA16A54WGF		51		110/120 VAC	Amber	Textured Polycarbonate
<b>Wildlife Friendly - Zone 2, 21 &amp; 22 (Standard)</b>						
P2BBMA23A5NWGN		25		100-277 VAC/120-250 VDC	Amber	Textured Polycarbonate
P4BBMA26A5NWGN		47		100-277 VAC/120-250 VDC	Amber	Textured Polycarbonate
<b>Wildlife Friendly - Zone 2, 21 &amp; 22 (Emergency Backup)</b>						
P2BBMA23A5NWGF		29		230/240 VAC	Amber	Textured Polycarbonate
P4BBMA26A5NWGF		51		230/240 VAC	Amber	Textured Polycarbonate

All values typical unless otherwise stated (tolerance +/- 10%).

**DISCLAIMER.** All product information provided is, to the best of Dialight's knowledge, accurate as of the date of publication. When ordering, refer to [www.dialight.com](http://www.dialight.com) for current versions of: (a) relevant product documentation (including the relevant product data sheets); (b) Dialight terms and conditions of sale; and, (c) the relevant product warranty. To the extent that any contract is deemed formed between Dialight and the purchaser of Dialight products and/or an end-user, versions of documents available at [www.dialight.com](http://www.dialight.com) as at the date of sale shall be the versions incorporated therein. In the event of any discrepancy between this document or information provided at [www.dialight.com](http://www.dialight.com), the latter shall prevail.

## Accessories



### ELX-CMB-SS

- 316 Marine Grade stainless steel ceiling mount kit



### ELX-PC-SS-42

- 40–45mm Ø 316 Marine Grade stainless steel pole clamp



### ELX-WMB-SS-45

- 45° 316 Marine Grade stainless steel wall mount kit



### HBXCAB48

- 1.2m (48") long stainless steel safety rope (for use with safety bracket)



### ELX-PC-SS-47

- 47–51mm Ø 316 Marine Grade stainless steel pole clamp

### ELX-WMB-SS-60

- 60° 316 Marine Grade stainless steel wall mount kit

### ELX-PC-SS-54

- 54–57mm Ø 316 Marine Grade stainless steel pole clamp

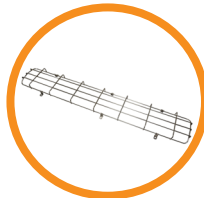
### ELX-PC-SS-59

- 59–62mm Ø 316 Marine Grade stainless steel pole clamp



### ELX-EYE-SS

- 316 Marine Grade stainless steel eyelet kit



### RLX-WG-2

- Wire guard for 764mm model

### RLX-WG-4

- Wire guard for 1244mm model



### RLX-BATT-KIT-2

- 764mm replacement battery kit



### RL-WIRELESS-2\*

- Wireless controls kit for 764mm models (Zone 2 only)

### RLX-BATT-KIT-4

- 1244mm replacement battery kit

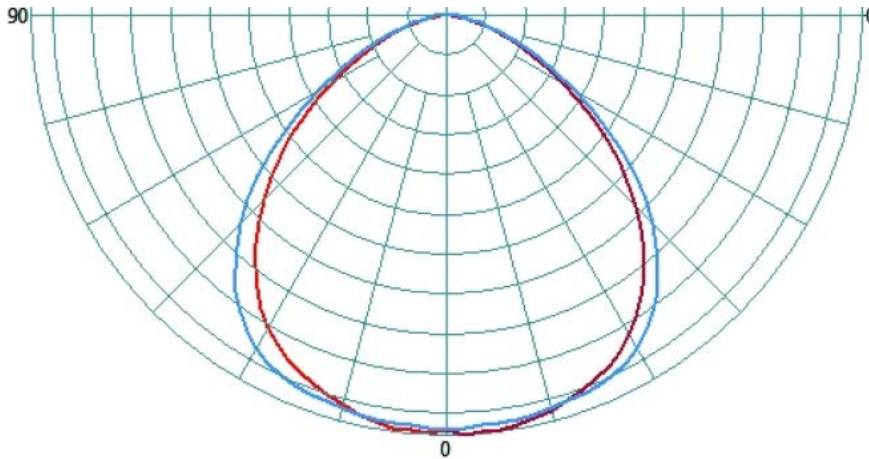
### RL-WIRELESS-4\*

- Wireless controls kit for 1244mm models (Zone 2 only)

\*Must be fitted to GRP Linear by authorized Dialight personnel prior to delivery

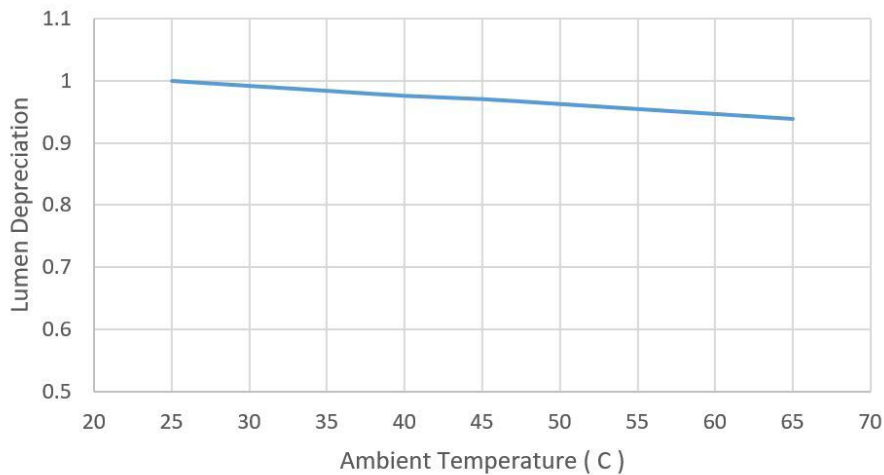
**DISCLAIMER.** All product information provided is, to the best of Dialight's knowledge, accurate as of the date of publication. When ordering, refer to [www.dialight.com](http://www.dialight.com) for current versions of: (a) relevant product documentation (including the relevant product data sheets); (b) Dialight terms and conditions of sale; and, (c) the relevant product warranty. To the extent that any contract is deemed formed between Dialight and the purchaser of Dialight products and/or an end-user, versions of documents available at [www.dialight.com](http://www.dialight.com) as at the date of sale shall be the versions incorporated therein. In the event of any discrepancy between this document or information provided at [www.dialight.com](http://www.dialight.com), the latter shall prevail.

## Beam Distribution

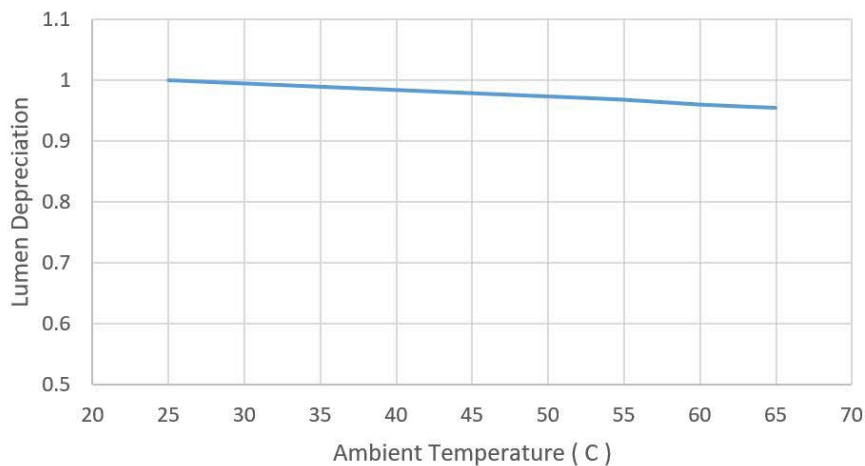


## Thermal Roll-Off

Thermal Rolloff - GRP Linear, 764mm model



Thermal Rolloff - GRP Linear, 1244mm model



**DISCLAIMER.** All product information provided is, to the best of Dialight's knowledge, accurate as of the date of publication. When ordering, refer to [www.dialight.com](http://www.dialight.com) for current versions of: (a) relevant product documentation (including the relevant product data sheets); (b) Dialight terms and conditions of sale; and, (c) the relevant product warranty. To the extent that any contract is deemed formed between Dialight and the purchaser of Dialight products and/or an end-user, versions of documents available at [www.dialight.com](http://www.dialight.com) as at the date of sale shall be the versions incorporated therein. In the event of any discrepancy between this document or information provided at [www.dialight.com](http://www.dialight.com), the latter shall prevail.

# Lumen Maintenance Factor

764mm GRP Linear									
Ambient Temperature	Hours								
	0	15000	30000	45000	60000	75000	90000	100000	150000
25°C	100%	98%	96%	95%	94%	92%	91%	90%	86%
30°C	99%	97%	96%	94%	93%	92%	90%	89%	85%
35°C	98%	96%	95%	93%	92%	91%	90%	89%	85%
40°C	98%	95%	94%	93%	91%	90%	89%	88%	84%
45°C	97%	95%	94%	92%	91%	90%	88%	88%	84%
50°C	96%	94%	93%	91%	90%	89%	88%	87%	83%
55°C	96%	93%	92%	91%	89%	88%	87%	86%	82%
60°C	95%	92%	91%	90%	89%	87%	86%	85%	82%
65°C	94%	91%	90%	88%	87%	85%	84%	83%	78%

1244mm GRP Linear									
Ambient Temperature	Hours								
	0	15000	30000	45000	60000	75000	90000	100000	150000
25°C	100%	98%	96%	95%	94%	92%	91%	90%	86%
30°C	99%	97%	96%	94%	93%	92%	91%	90%	86%
35°C	99%	97%	95%	94%	93%	91%	90%	89%	85%
40°C	98%	96%	95%	93%	92%	91%	90%	89%	85%
45°C	98%	96%	94%	93%	92%	90%	89%	88%	84%
50°C	97%	95%	94%	92%	91%	90%	89%	88%	84%
55°C	97%	95%	93%	92%	91%	89%	88%	87%	83%
60°C	96%	94%	92%	91%	90%	89%	87%	87%	83%
65°C	96%	93%	92%	91%	89%	88%	87%	86%	82%

**DISCLAIMER.** All product information provided is, to the best of Dialight's knowledge, accurate as of the date of publication. When ordering, refer to [www.dialight.com](http://www.dialight.com) for current versions of: (a) relevant product documentation (including the relevant product data sheets); (b) Dialight terms and conditions of sale; and, (c) the relevant product warranty. To the extent that any contract is deemed formed between Dialight and the purchaser of Dialight products and/or an end-user, versions of documents available at [www.dialight.com](http://www.dialight.com) as at the date of sale shall be the versions incorporated therein. In the event of any discrepancy between this document or information provided at [www.dialight.com](http://www.dialight.com), the latter shall prevail.

## Australia

108 Howe Street  
Osborne Park, WA 6017  
Tel: +61 (0) 8 9244 7600  
Fax: +61 (0) 8 9244 7601  
info@dialight.com.au

## Southeast Asia

33 Ubi Avenue 3  
#07-72 Vertex (Tower A)  
Singapore 408868  
Tel: +65 6578 7157  
Fax: +65 6578 7150  
enquiry@dialight.com.sg

### WARNING / DISCLAIMERS:

**Installation & secondary retention.** The use of this product without proper installation (including secondary retention / netting) and periodic inspections, could cause severe injury or death. Dialight recommends that all installations should use secondary retention / netting (appropriate to the installation environment) as applicable. Dialight products are intended for ultimate purchase, installation and operation by knowledgeable persons trained in the functional assessment, installation, use and maintenance of such products and all customers (including but not limited to end customers) are responsible for assessing the suitability of Dialight products for any given installation requirement. It is the exclusive responsibility of the contractor, installer and/or end-user to: (a) determine the suitability of the product for its intended application; and, (b) ensure that the product is safely installed (with secondary retention / netting as appropriate) and in compliance with all applicable laws and regulations.

**Product specifications & warranties.** All product information provided is, to the best of Dialight's knowledge, accurate as of the date of publication. All values and performance data herein are design or typical values when measured under laboratory conditions. The information herein is subject to change without notice. The products / software detailed herein are subject to applicable warranties and terms and conditions of use/purchase. Unless agreed otherwise in writing by an authorized representative of Dialight, Dialight does not represent that its products are fit for any particular purpose and accepts no liability for the installation and/or unauthorised use of its products. When ordering, refer to [www.dialight.com](http://www.dialight.com) for current versions of: (a) relevant product documentation (including relevant product data sheets); (b) Dialight terms and conditions of sale; and, (c) the relevant product warranties. To the extent that any contract is deemed formed between Dialight and the purchaser of Dialight products and/or an end-user, versions of documents available at [www.dialight.com](http://www.dialight.com) as at the date of sale shall be the versions incorporated therein. In the event of any discrepancy between this document and information provided at [www.dialight.com](http://www.dialight.com), the latter shall prevail.

**Exclusion of liability.** To the extent permissible under the relevant law, Dialight disclaims all liability for personal injury and/or other damage resulting from any dislodgment or other dislocation of its products. Whilst Dialight has used its reasonable endeavours to ensure the completeness and accuracy of information herein, Dialight does not assume any liability for damages resulting from use of this information or for any third-party representations made in relation to Dialight products.